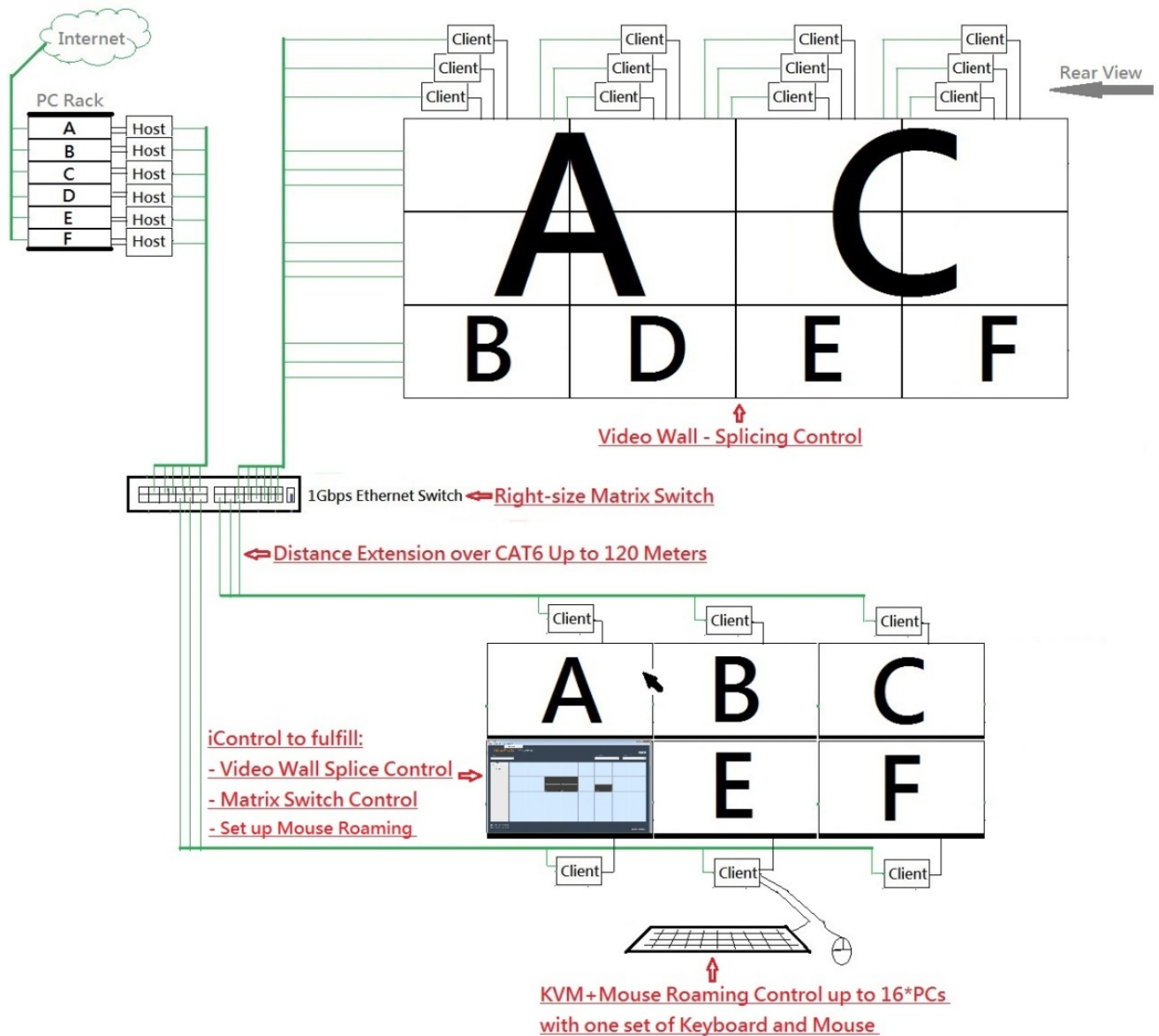


User's Manual – iControl & KC

The iControl is the control software of Windows version installed in the Console PC for UHD/FHD over IP to achieve the main functions of many-to-many matrix switch, splice-controlling on video wall and KVM mouse roaming. So the users can connect the multiple AV sources with many displays through the hardware devices of UHD/FHD over IP-Hosts/Clients as well as control them with the software iControl in the IT centre room.

The KC (KVM Client) is installed in the source PCs and linked with the iControl for users to use one set of Keyboard, Mouse and Monitor switching among the source PCs. We need to set up its access in iControl.

System Cabling:

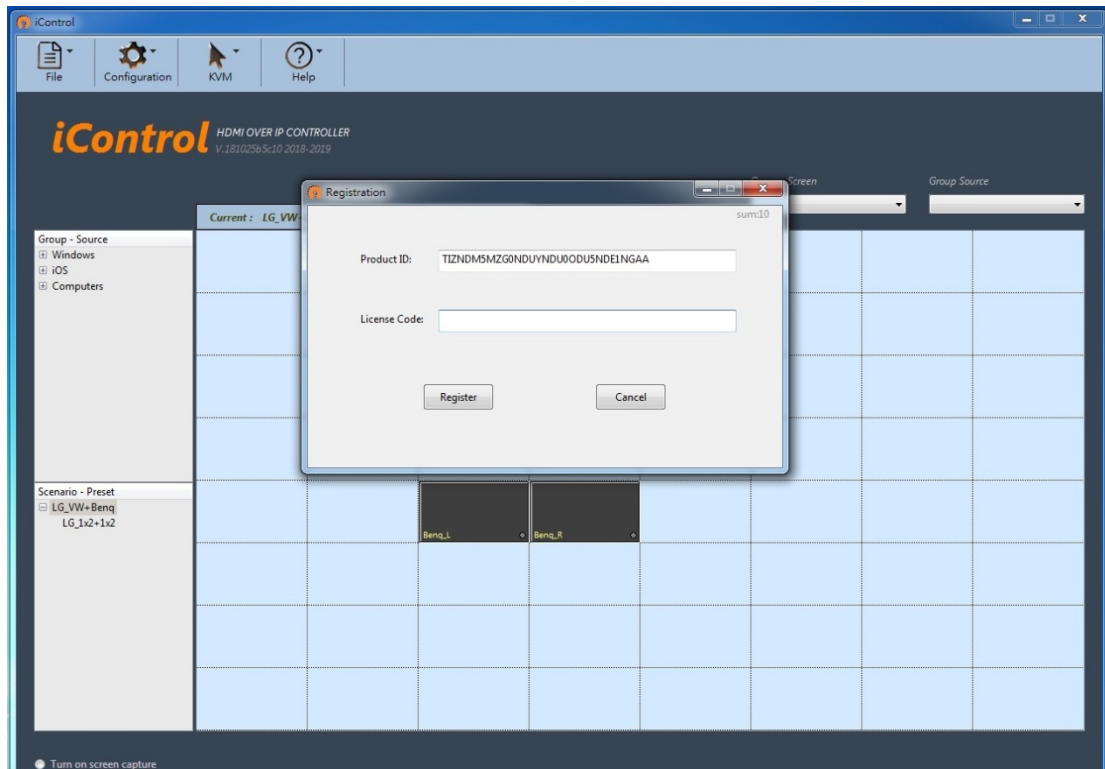


User's Manual – iControl & KC

- Connect all the Hosts, Clients and Control PC with the Gigabit Switch using CAT6 cables, **the Gigabit Switch must support and enable IGMP Snooping and 8K Jumbo Frame.**
- Set up each Host's Group ID by adjusting the 4-pin DIP switch, ON means "1", OFF means "0", there are 16 groups available to set up in this way.
- Turn on all the Hosts/Clients/Control PC/Gigabit Switch on the LAN.

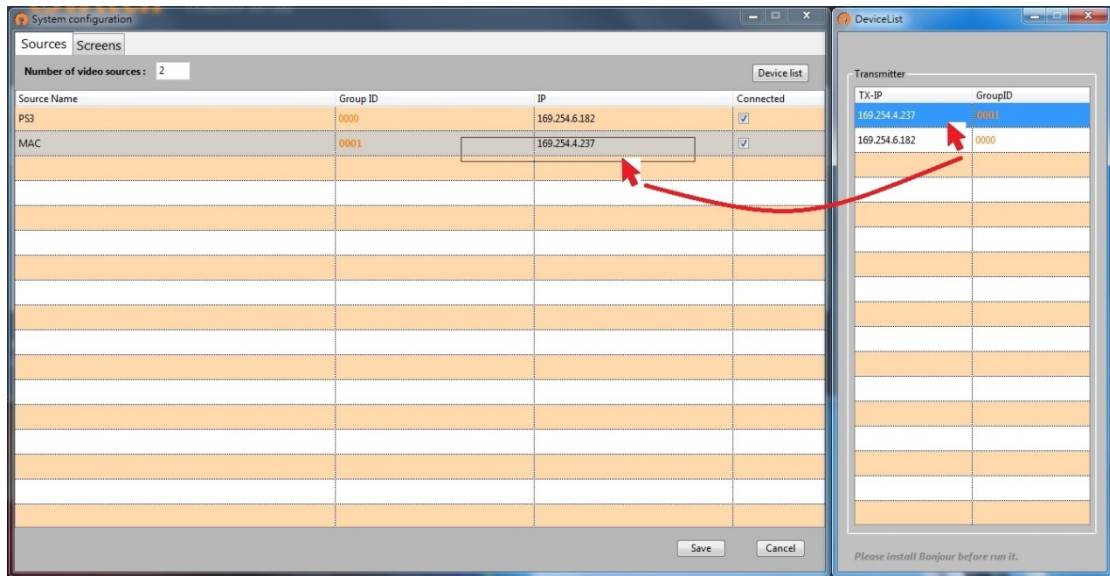
Install and Set Up iControl

1. Download the "bonjour SDK for Windows" and install it in the Console PC.
Here's the download link: <http://developer.apple.com/opensource/>
2. **Set up the Console PC IP as "169.254.0.100"** and then install and run iControl.
3. Click "Help" and then "Register" to get a Product ID, send it back to us for getting the License Code.
4. Key in the License Code to use the iControl legally.



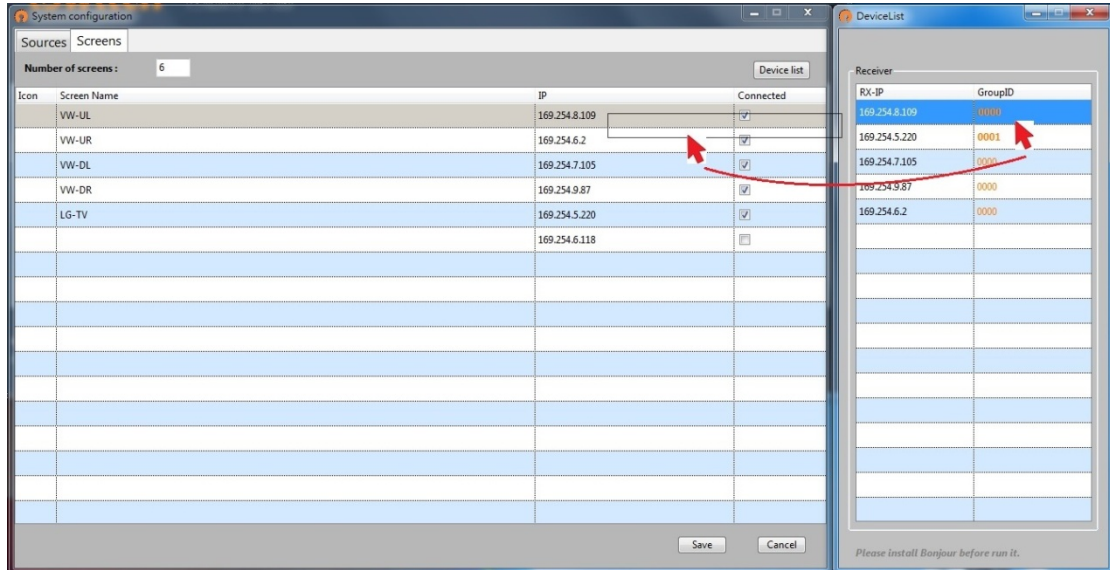
5. Set up "Sources"
 - Click "Configuration" => "System configuration" => "Sources"
 - Key in the Number of video sources.
 - Key in the Source Name.
 - Click the [Device List].
 - Drag and drop each IP to its source name.
 - Click [Save] and the iControl will re-start.

User's Manual – iControl & KC



6. Set up "Screens"

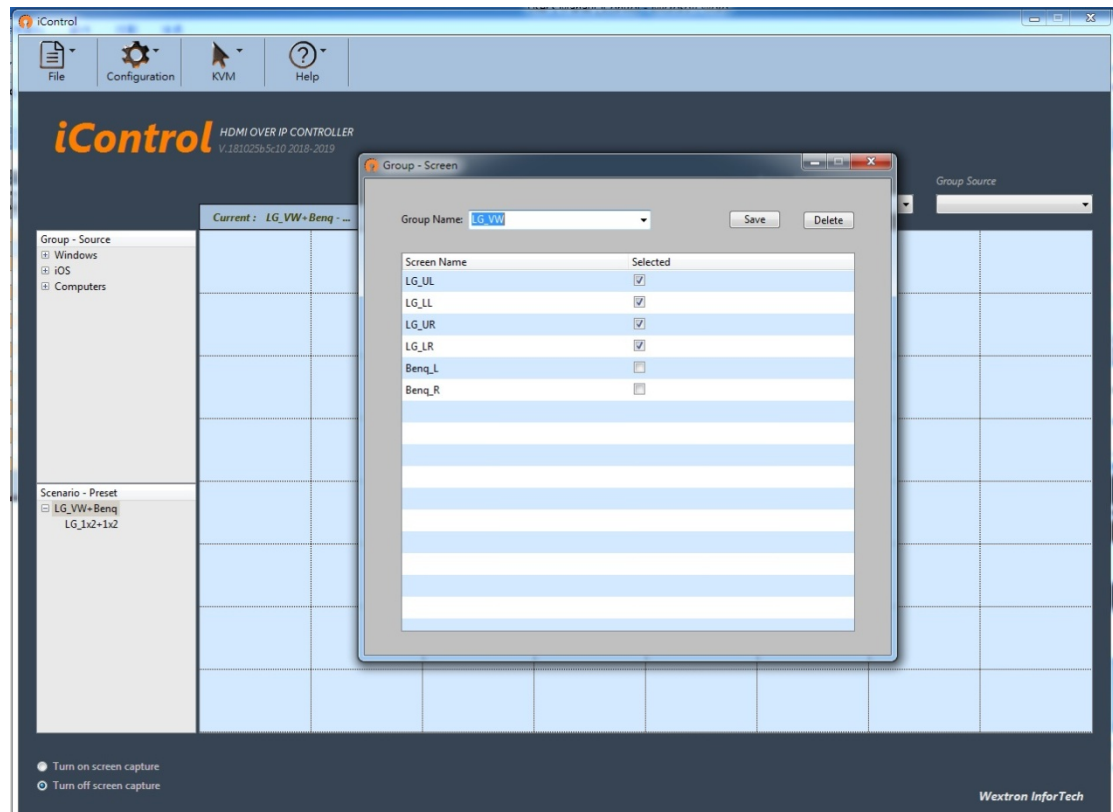
- Click "Configuration" => "System configuration" => "Screens"
- Key in the Number of screens.
- Select the proper Icon and Key in the Screen Name.
- Click the [Device List] and then drag and drop each IP to its screen name.
- Click [Save] and the iControl will re-start.



7. Set up "Screen Group"

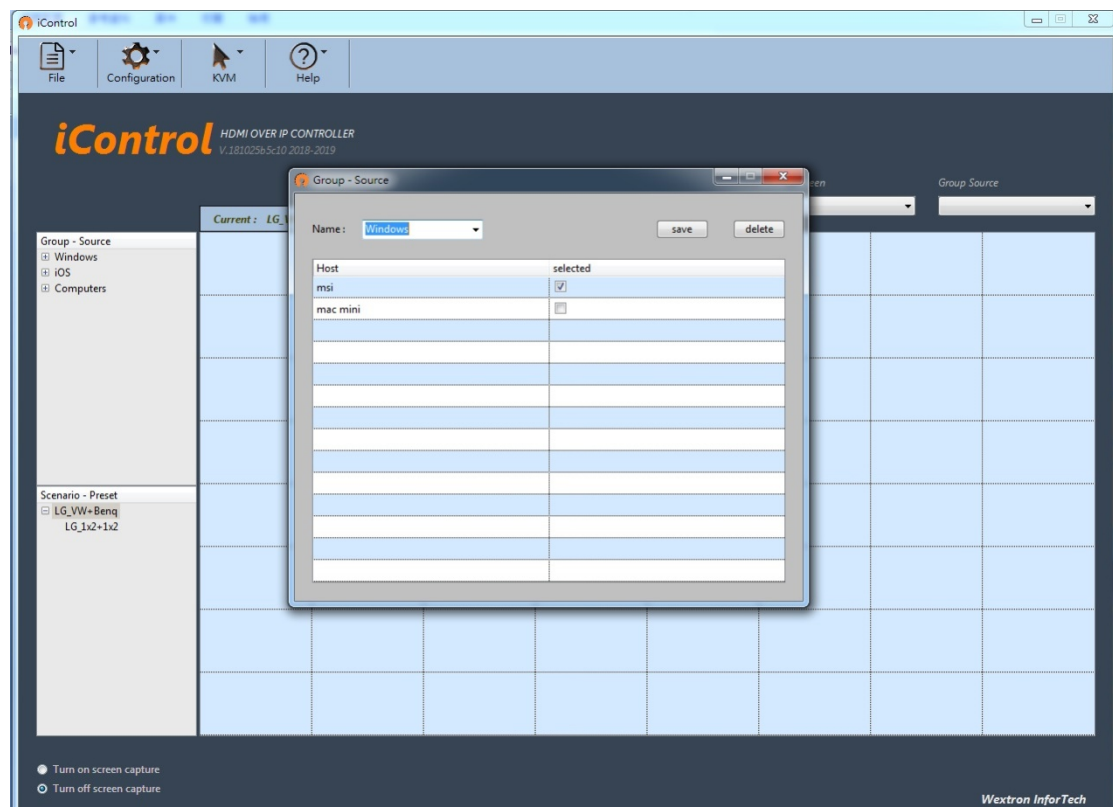
- Click "Configuration" => "System configuration" => "Group" => "Screen Group"
- Key in the Name and select the group members by checking the blank boxes.
- Click [Save] to store the settings and then close the "Group – Screen" window.

User's Manual – iControl & KC



8. Set up "Source Group"

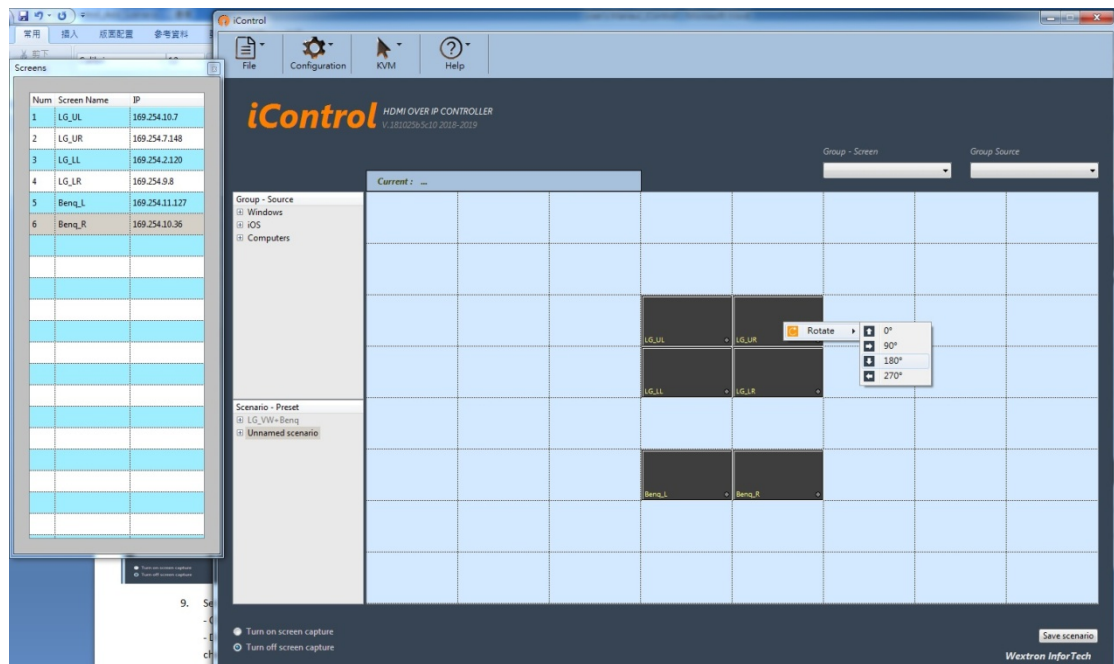
- Click "Configuration" => "System configuration" => "Group" => "Source Group"
- Key in the Name and select the group members by checking the blank boxes.
- Click [Save] to store the settings and then close the "Group – Source" window.



User's Manual – iControl & KC

9. Set up “Add Scenario”

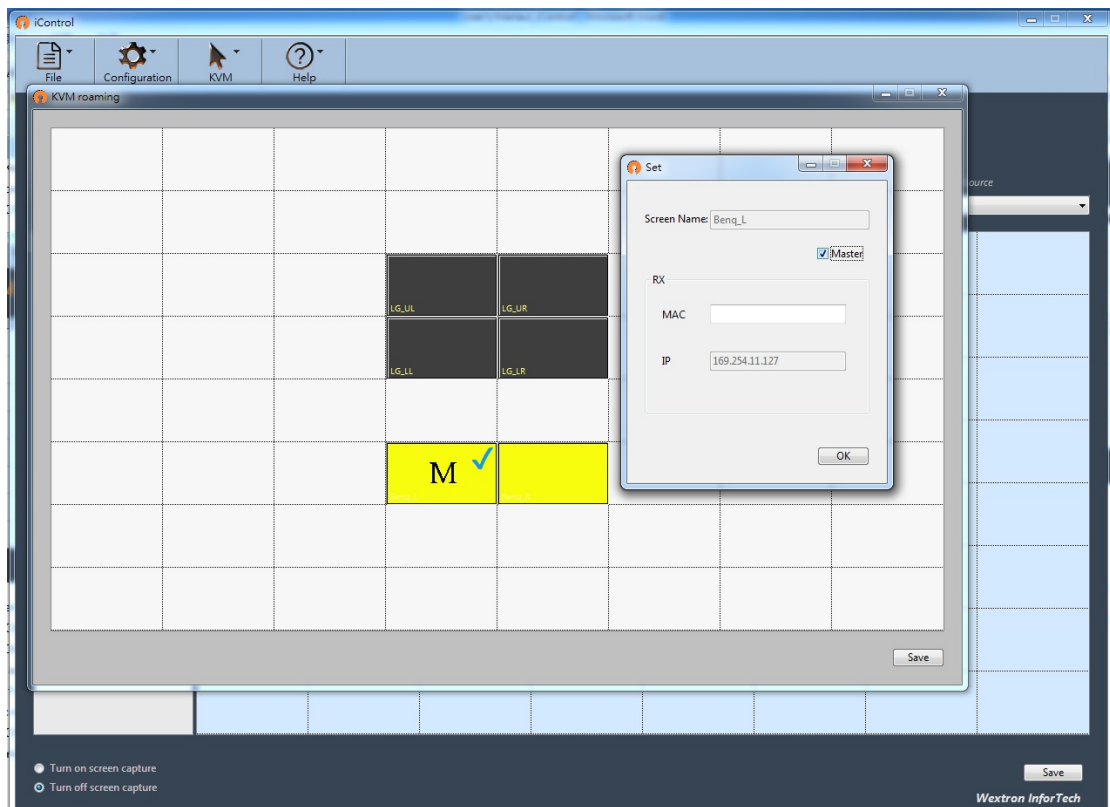
- Click “Configuration” => “Add Scenario”
- Drag the “Screen Name” from the Screens Table and drop it at the position you want to place in the Screen Layout Area.
- If need, you can rotate the image by clicking the mouse's right button at the screen position.
- Click [Save Scenario] at the lower right corner to store this scenario setting.
- You can repeat the steps above to create another scenario.



10. Set up “KVM Roaming”

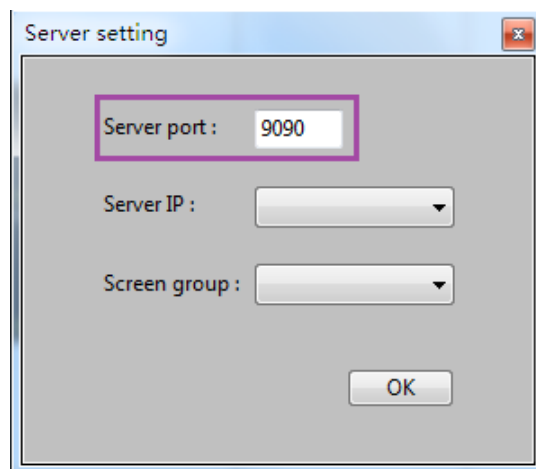
- Click “KVM” => “KVM Roaming”
- Click the upper-left corner screen and then click the lower-right corner screen to define the scope of mouse roaming. All the screens must be side by side in horizontal or vertical.
- Click the right button at the Master screen (which is really connected with the keyboard/mouse) and then click the “Set” => “Master” => “OK” => “Save” to finish the setting and close the “KVM roaming” window.

User's Manual – iControl & KC



11. Set up "Server Setting" for KC

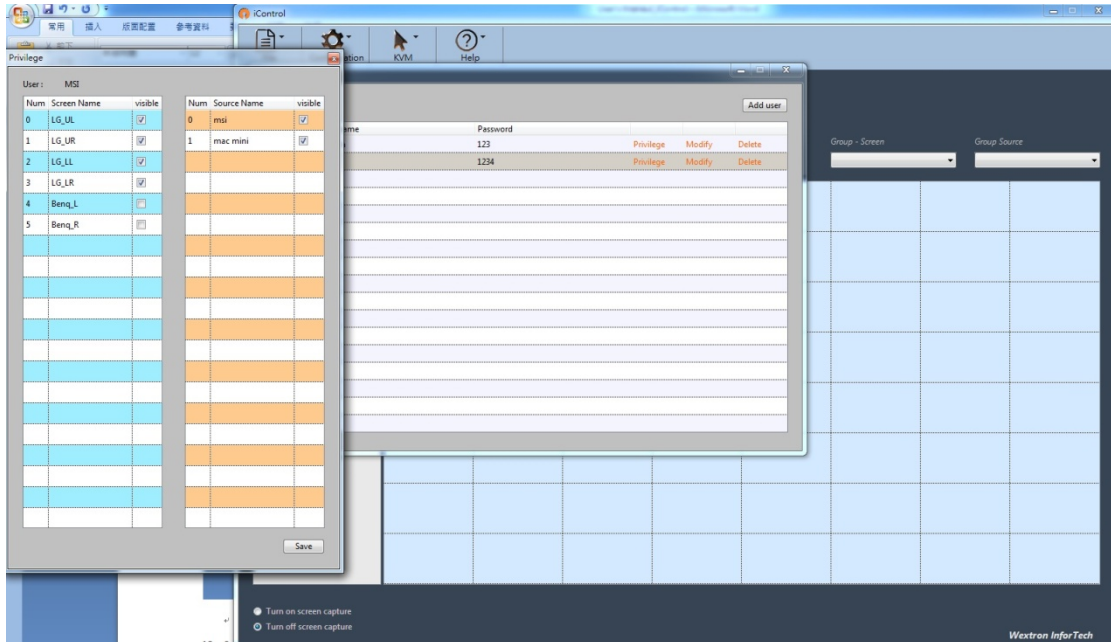
- Click "Configuration" => "Server Setting"
- The Server port 9090 is default, you don't need to change it
- Server IP: select "169.254.0.100" which you set for the Console PC.
- Screen group: Select one of the Screen Groups you set up formerly, so you can push the screen image onto them by pressing the combination keys "Ctrl+ ↑" (hold the Ctrl key and then press 3 times of ↑ key) when the source PC is installed with KC.



User's Manual – iControl & KC

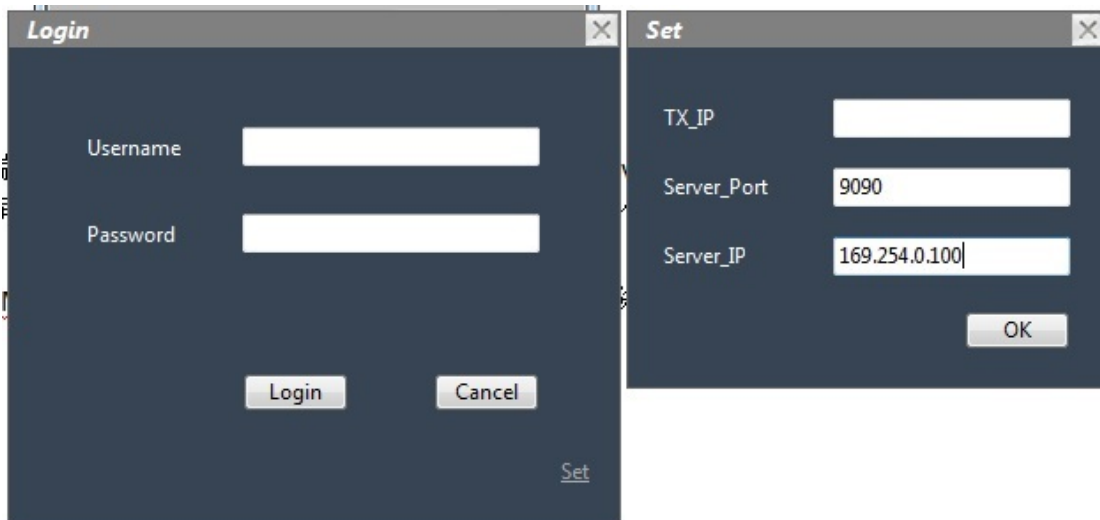
12. Set up “User Management” for KC

- Click “Configuration” => “User Management” => “Add user” to set up the Username and Password for a new KC user.
- Click the “Privilege” to set up this new KC user’s access limitations, and the “Save”



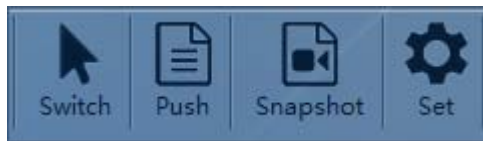
Install and Set Up KC

1. Install Bonjour SDK and KC in the source PCs.
2. Set up the IP addresses for the source PCs in the segment “169.254.0.101~116” matching with the 16 Group IDs.
3. Run KC and then click the “Set” at the lower-right corner of Login window to key in the TX_IP, Server_Port (default: 9090) and the Server_IP (as the same as iControl: 169.254.0.100) and click “OK” to get back Login window.

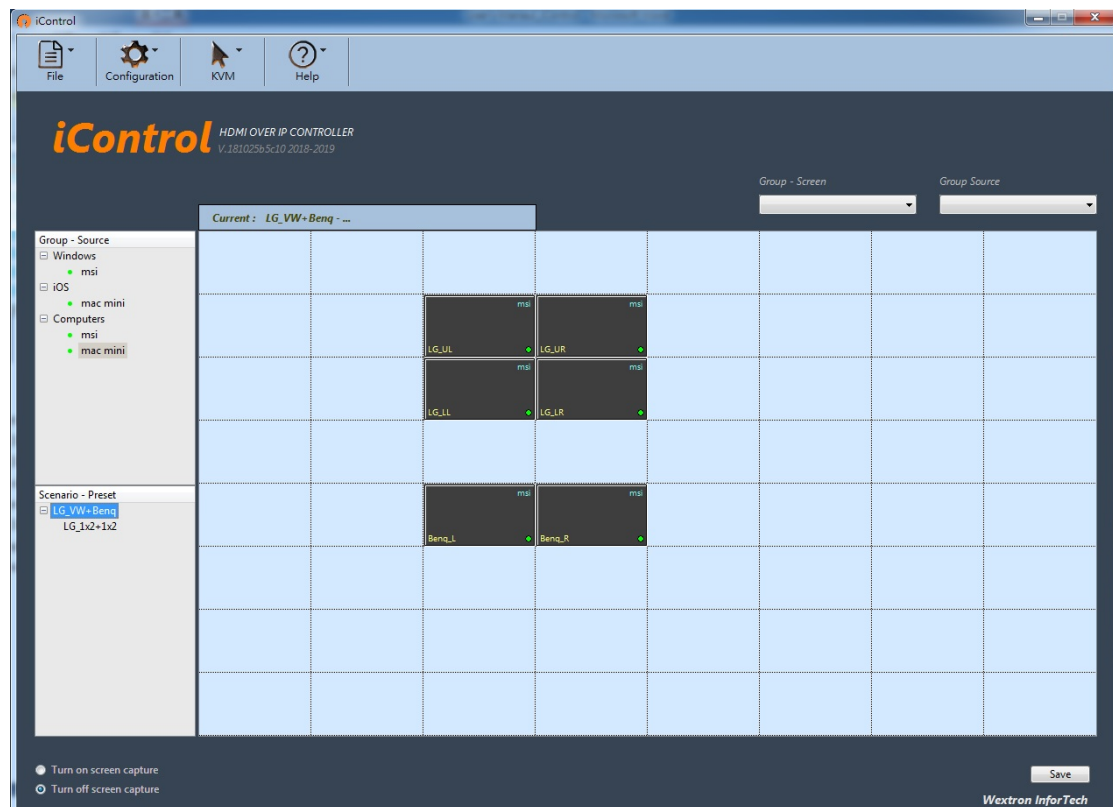


User's Manual – iControl & KC

4. Key in the Username and Password you set up for KC's access limitations in the iControl's "User Management" and then click "Login" to link with iControl. The function menu will show up at the upper-right corner of screen as below.



iControl Operation



1. **Monitoring:** Click the "Turn on screen capture" at the lower-left corner to view the playing video on each screen at 1 frame per second. Click the "Turn off screen capture" to close frame capture.
2. **Changing Source:** Drag the source name listed in the field of Group-Source at the left side and drop it at the screen position that you want to change its source.
3. **Video Wall Splicing:** Click the upper-left corner screen and then click the lower-right corner screen to combine all the screens in the square or triangle to form an image.
4. **Cancel Video Wall Splicing:** Click the right button at any screen on spliced video wall to cancel the combination or to get this screen back to single display but the

User's Manual – iControl & KC

others are still in combination.

5. **Scenario Preset:** Click the “Save” at the lower-right corner to store the present operation settings as a preset scenario so you can retrieve it right away in the future.
6. **Group Screen vs. Group Source:** Drop down the “Group Screen” menu at the upper-right corner to select the group screens you set up previously in Configuration and then drop down the “Group Source” menu to change their video source to the one you select.
7. **KVM Mouse Roaming:** Move the mouse crossing the monitors you set up previously in KVM Roaming to operate the multiple PCs with one set of keyboard and mouse.
8. **Recognizing the present source for each RX:** Click the “Configuration” => “OSD” to show the present source name on the screen.
9. **Save the current settings as default:** Click the “File” => “Save current settings as default” to retrieve when you execute the iControl the next time.
10. **Exit:** Click “File” => “Exit” to quit iControl.

KC Operation



1. **Source Switch:** Click the “Switch” to call up the Screen-Source table, click the screen name(s) you want to change its/their source and then click the source name to change.
2. **Push the image onto the screen:** Click “Push” => “Select a screen” => “Select a Img” => “Upload” to push the selected image onto the selected screen.
3. **Snapshot and save the current screen:** Click “Snapshot” to save the current screen image into the Snapshot folder in KC directory.